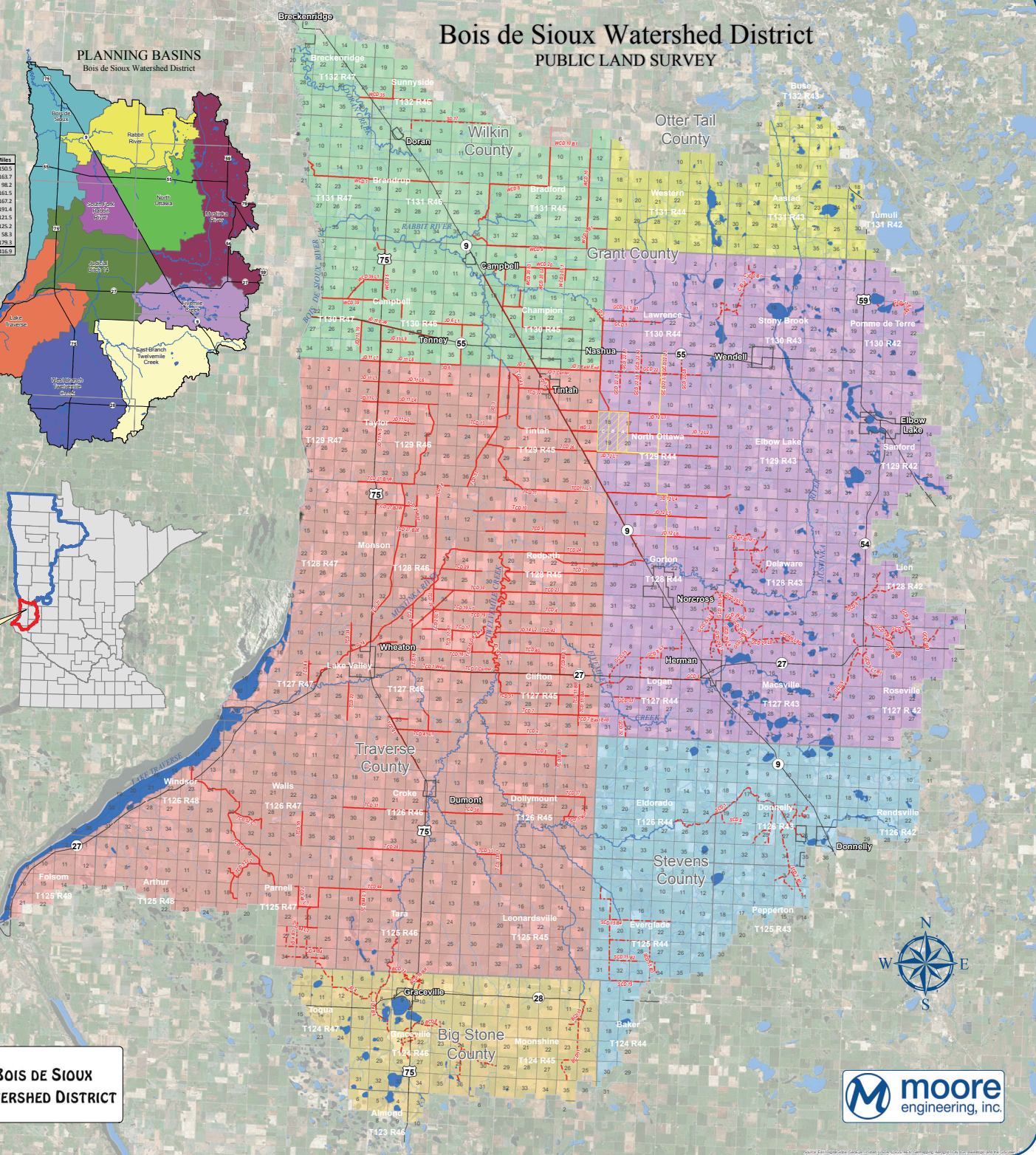


# Bois de Sioux Watershed District PUBLIC LAND SURVEY

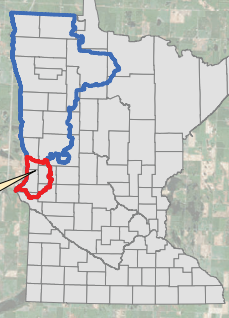
## PLANNING BASINS

Bois de Sioux Watershed District

Planning Basin	Sq. Miles
Bois de Sioux	180.5
East Branch Twelvemile Creek	163.7
Fivemile Creek	98.2
Judicial Ditch 14	161.5
Lake Traverse	167.2
Mustinka River	191.4
North Ottawa	121.5
Rabbit River	125.2
South Fork Rabbit River	58.3
West Branch Twelvemile Creek	179.8
<b>Total</b>	<b>1,416.9</b>



BOSWD as it pertains to the Red River Basin in Minnesota



**BOIS DE SIOUX  
WATERSHED DISTRICT**

**moore  
engineering, inc.**

Scale: 1:50,000